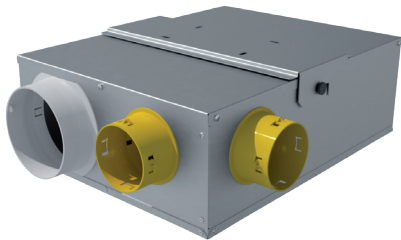




# MULTIBOX

Whole-house mechanical extract ventilation  
Multiport centrifugal box



Comply with ErP Directive and  
UE Regulation 1253/2014  
Ventilation Unit (VU)

- High energy saving
- Silent operation
- Extreme ease of installation and maintenance
- Silent operation

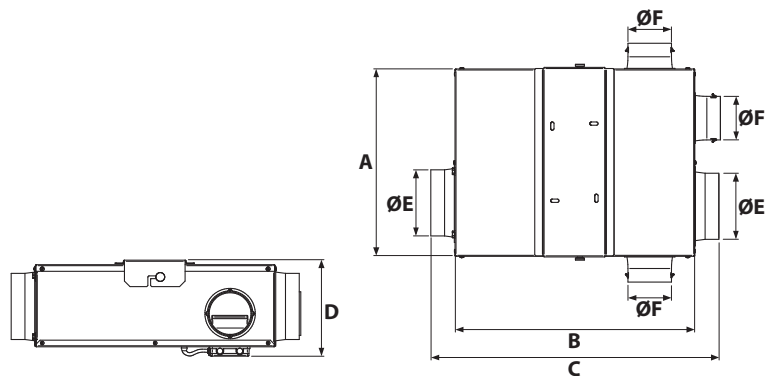


## PERFORMANCE

MODELS	CONFIGURATION	MOTOR	m³/h	l/s	W	A	dB(A)*
			max	max	max	max	max
MULTIBOX Control HY	3x 80 / 125	AC	348	97	47,5	0,21	35
MULTIBOX Control AQS	3x 80 / 125	AC	348	97	47,5	0,21	35
MULTIBOX Control HY	3x 80 / 125	EC	490	136	95	0,77	37
MULTIBOX Control AQS	3x 80 / 125	EC	490	136	95	0,77	37

\* Lp(A) measured at 3 m in open field 230V-50Hz

## DIMENSIONS (mm)



TYPE	A	B	C	D	ØE	ØF	Kg
MULTIBOX	345	437	523	174	125	80	6,2

## CONTROL PANEL



**CP-RH**  
Supplied with  
Multibox Control  
HY AC and EC

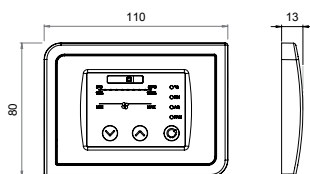


**CP-AQS**  
Supplied with  
Multibox Control  
AQS AC and EC

### CHARACTERISTICS

#### Control panel:

Measures a set of (control) parameters representative of the ventilation demand / quality of the indoor air.



FUNCTION	CP-RH	CP-AQS
Temperature control	●	●
Relative humidity detection	●	●
Air quality control		●
Continuous Speed Regulation	●	●

## INSTALLATION

